

UNITED

Forklift and
Access Solutions

PULSEO
GENERATION



HA20 LE PRO Electric Articulating Boom Lift

ECO-Friendly

- › Electric drive and operations
- › Clean and silent operation designed for use in event the most sensitive work areas

Versatile. Works anywhere, anytime

- › Non-marking tyres for indoor use
- › 4 wheel drive for rough terrain use
- › Work quietly without work site disruptions

Optimal Productivity

- › 360° continuous rotation turret
- › Quick, proportional and simultaneous movements.
- › Large modular basket
- › Dual load capacity, up to 350kg

Extend duty cycle, increase productivity

- › Built-in multi-voltage charger
- › Low fuel consumption range extending engine



 **Watch the video**

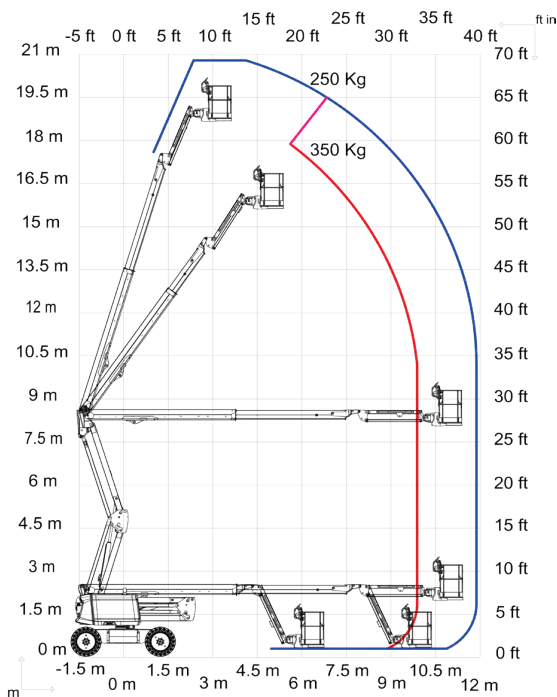
Scan with a mobile QR
reader



UNITED It's all about you

Specifications

Working height		20.76 m
Platform height		18.76 m
Horizontal outreach		11.91 m
Up and over clearance		8.52 m
Lift capacity		250 kg (2 pers.) opt. 350kg
F x G	Platform size	1.83 x 0.80 m
A	Length	8.54 m
H	Length - storage	6.19 m
B	Width	2.41 m
C	Height - stowed	2.50 m
I	Height - storage	3.0 m
Platform rotation		180° (+90°/-90°)
Turntable rotation		360° continuous
Tailswing		41 cm
D	Wheelbase	2.50 m
E	Ground clearance	46 cm
Tilt		4 °
Drive speed		0.7 - 5 km/h
Gradeability		45 %
Turning radius - outside		3.70 m
Tyres - solid rough terrain		1025 x 365 mm
Batteries		12 x 6 V - 435 Ah (C20)
Range extender		Kubota, 18.5kW
Weight		9785 kg



HA20 LE PRO

Standard Equipment

- › Haulotte Activ'Lighting Safe Load System
- › Haulotte Activ'Shield™ Bar 2.0
- › Haulotte Activ'Screen
- › Universal Telematics plug
- › 72 V battery pack (435 Ah)
- › Centralised battery watering system
- › Battery charger indicator at upper and lower control boxes
- › Multi-voltage charger (110 - 230 V) and integrated range extender (18.5kW)
- › Haulotte Activ'Energy Management: smart battery management system
- › 4 wheel drive: brushless AC motors at each wheel
- › 4 wheel steer
- › Front oscillating axle
- › Smooth and proportional movements
- › Upper control box cover
- › Tool tray
- › Large modular platform 2.44 x 0.91 m with lateral swing door entry gate
- › AC power to platform (110 / 230 V) (option)
- › Swing out engine tray
- › Sound and light alarm for tilt and load
- › Travel alarm
- › Rotating beacon

Options & Accessories

- › Non-marking tyres
- › Dual load capacity 250 / 350 kg
- › Haulotte Activ'Shield Bar 2.0
- › Large platform 2.44 x 0.91 m
- › Side swing door entry gate
- › Pipe rack kit
- › Glazier kit
- › Power to platform 110 / 230 V (female plug in basket)
- › Biodegradable hydraulic oil
- › Cold weather kit
- › Anti overspeed kit
- › Air-line to platform
- › Flashing light

